



Three bedrooms and two baths

Interior Space: 1,301 sf

Solarium (Lv5): 133 sf

Solarium (Lv6): 139sf

Level 5 Patio: 500 sf

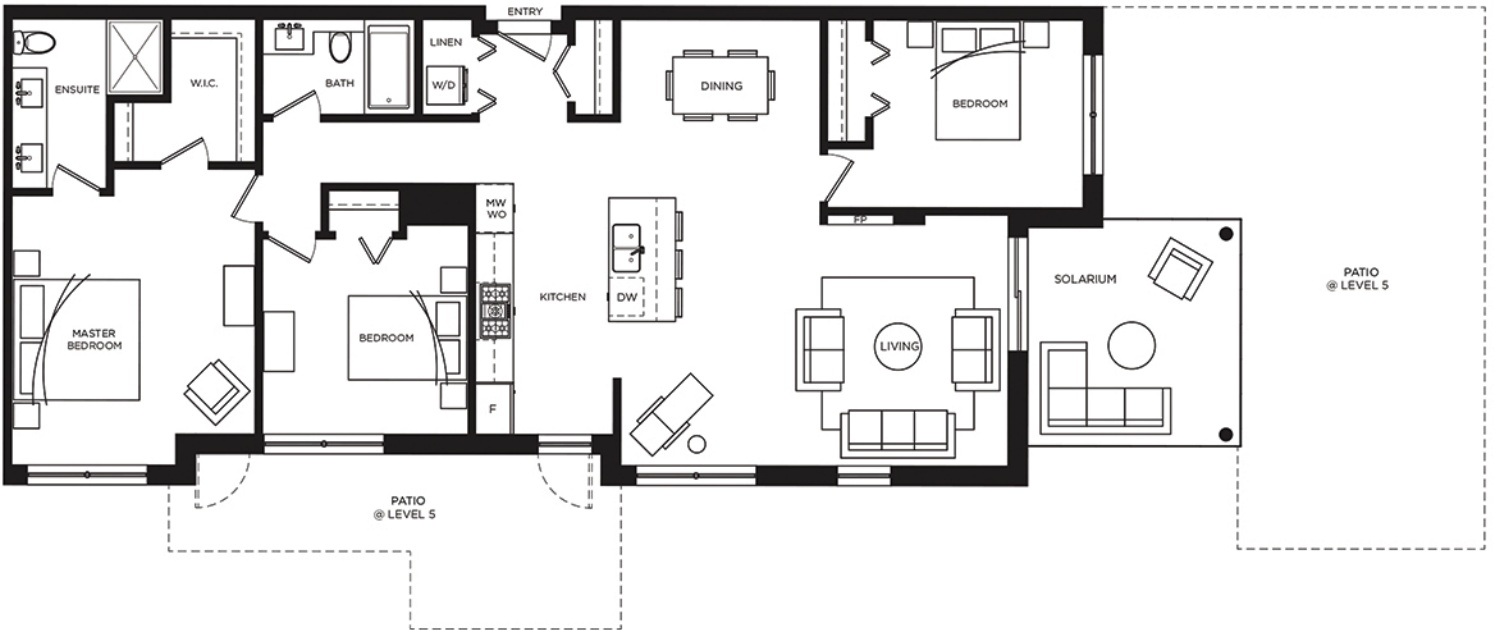
Total Living Space: 1,434 sf (Lv5) - 1,440 sf (Lv6)



Level 6



Level 5



In a continuing effort to make product improvements, the developer reserves the right to modify or change plans, specifications, and features without notice. Floorplans, elevations, room sizes, decks, and square footages are approximate and may slightly vary from the actual built home. Renderings are artist illustrations. Furniture and décor items are shown as example only and are not included. This is not an offering for sale. Any such offer may only be made with a BC Disclosure Statement. E.&O.E.